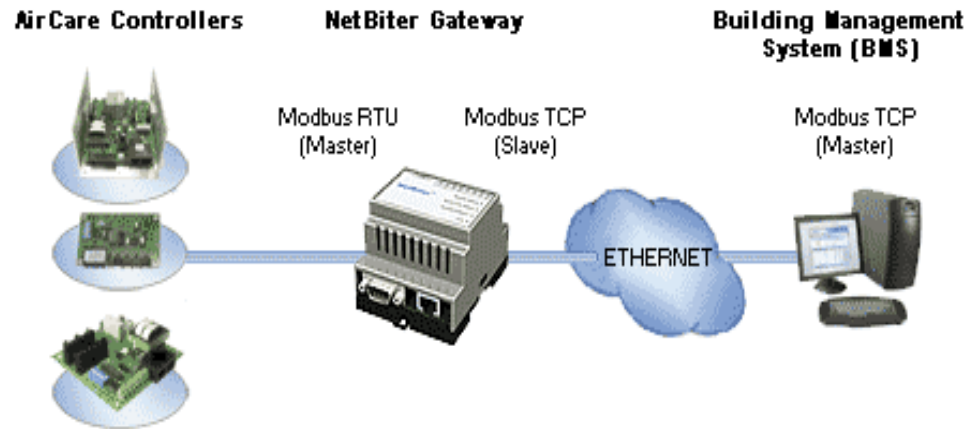


AirCare Partners With IntelliCom



AirCare Automation partners with IntelliCom Innovation to incorporate Intellicom Gateway products in AirCare control system as well as general Building Management Systems integration.

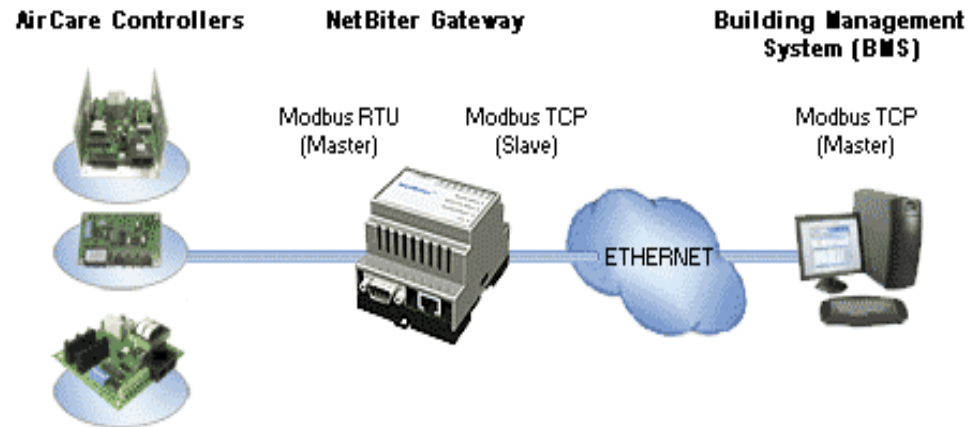
BMS-Gateway-AirCare System Architecture



A BMS/Gateway/AirCare-controller system

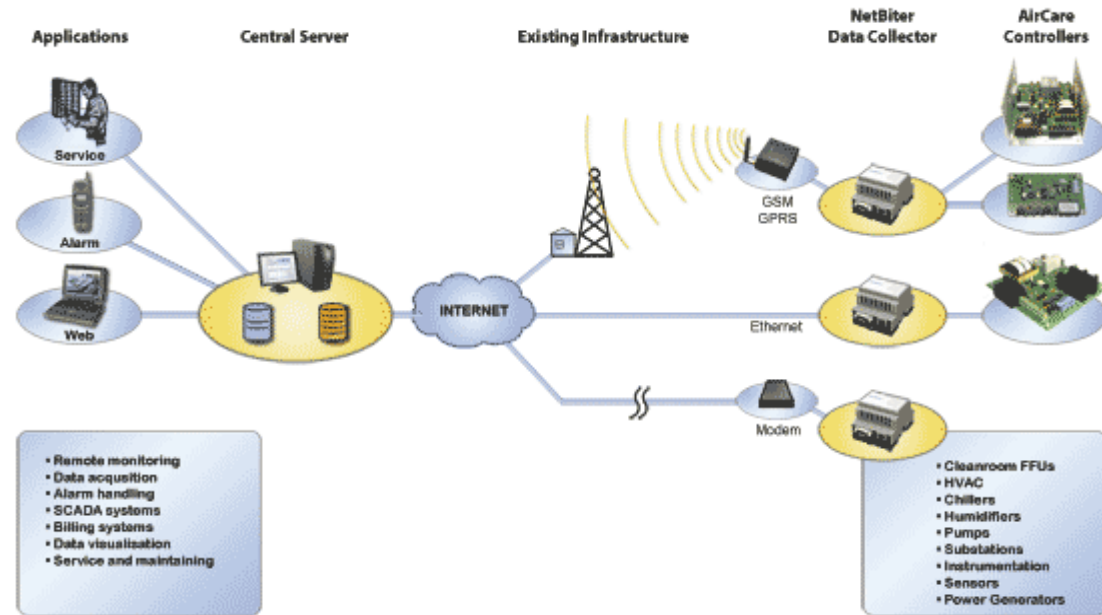
Bi-directional communication between the BMS & AirCare Controller is translated via the IntelliCom Gateway.

BMS/Gateway/AirCare System (cont'd)



- The BMS connects to the gateway via ethernet connection (RS485 cable w/RJ45 connectors) but can also be via (RS232). BMS-Gateway communication is via Modbus TCP.
- The Gateway connects to the AirCare controllers via RS485 cable (RJ45 at AirCare Controllers & screw connectors at Gateway). The Gateway translates the incoming Modbus TCP to Modbus RTU to properly interface with the controllers.

Range of Systems



Range of system communications/connections, including ethernet LAN or TCP-IP (internet), telephone modem &/or global satellite modem (gsm).

Facilitates connection to serial devices worldwide

IntelliCom Products

Plastic



Metal



NetBiter® RTU-TCP Gateway:

- Translates Modbus Serial (RTU or ASCII) to Modbus Ethernet (TCP) & mobile networks for use with BMS, PLC, SCADA, etc.
- Interfacing to AirCare smart motor controllers, power meters, temperature regulators etc., facilitates remote access & load control, as well as implementing larger systems.

IntelliCom Products (cont'd)

Plastic



Metal



- **NetBiter® WebSCADA:**

- Industrial gateway that contains web server for monitor & control of system serial devices over the web.
- Contains capabilities such as alarm (SMS, Email & SNMP) & data log w/trend graphing.

- **GSM/GPRS Modem Kit**

- The kit includes the terminal modem, power supply, antenna & cable & enables worldwide communication between a server & a gateway.

- **WebSCADA GSM/GPRS Modem**

- A combination wireless modem & NetBiter® webSCADA that facilitates worldwide communication between a server & a webSCADA in a single part.

IntelliCom Products (cont'd)



NetBiter® I/O Extender

- A device that enables interface to equipment & to feedback data to computer, or extends NetBiter® webSCADA I/O capability to display data & communicate w/equipment & PLCs.
- Communicates in Modbus Serial (acts solely as a Modbus slave).
- The I/O Extender contains 4 digital inputs & outputs that can drive lamps or alarms, either directly or via relays.
- Also contains 2 analog inputs & 1 output as well as 2 RTD (Resistance Temperature Device) inputs.

IntelliCom Products (cont'd)

Plastic



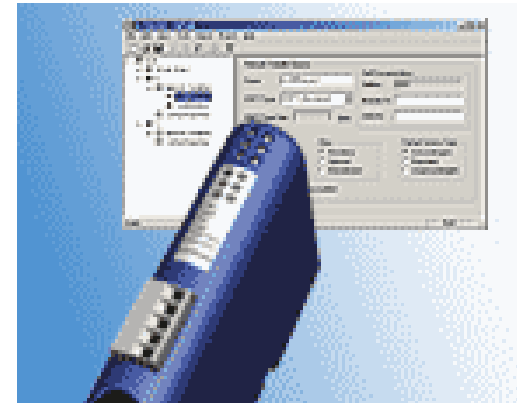
Metal



NetBiter® Serial Server

- A combination software program & remote serial COM port that can communicate in any language to configure, maintain or control remote devices (e.g. PLCs or equipment).

IntelliCom Products (cont'd)



LMS Gateway

- Converts Modbus RTU registers to LonWorks variables.
- The gateway acts as a slave on the MODBUS side.
- The module supports up to about 250 LonWorks SNVTs (Standard Network Variable Types).
- Configurable using the **LWTool** configuration program (software shown behind unit).

Part Numbers

<u>Part Type</u>	<u>Plastic Part #</u>	<u>Metal Part #</u>
<u>webSCADA</u>	0120 9999 02	0120 9999 10
<u>Modbus RTU-TCP</u>	0120 9999 01	0120 9999 05
<u>Serial Server</u>	0130 9999 01	0130 9999 02
<u>I/O Extender</u>	0920 9999 09	N/A
<u>LMS Gateway</u>	0510 9999 01	N/A
<u>WebSCADA GSM/GPRS</u>	0122 9999 01	N/A
<u>GSM/GPRS Modem Kit</u> (includes terminal modem, power supply, antenna & cable)	0610 9999 10	N/A
		<u>Part #</u>
<u>LWTool</u> (includes configuration tool CD & cable)		0510 9999 02
<u>webSCADA Design Kit</u> (Includes set of JAVA Applets to customize web pages)		0110 9999 02

Summary

- IntelliCom products are synergistic with AirCare smart controllers & will facilitate customers implementing larger & more varied systems with increased monitoring & control capabilities.
- Industrial Automation applications such as power generation & instrumentation can be addressed with these new interface products.
- Technical Questions – Application Support:
 - Jeff Fishbein 310-350-4430
 - jeff@aircareautomation.com
- For Pricing / Customer Service:
 - Toll Free (888) 543-8037
 - service@aircareautomation.com